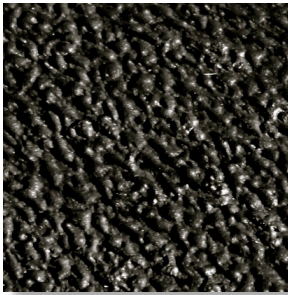


# The SmartDitch System



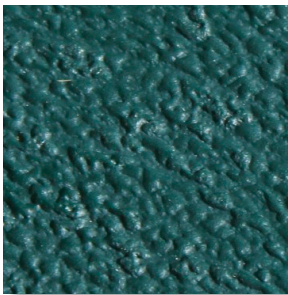
Basic Black

#### Size Availability:

- 12" & 24" Trapezoidal
- 24" Semi-Circular

#### Suggested Applications:

- Roadside Drainage
- Landfill Drainage
- Industrial Site Drainage
- Irrigation Channels
- Stormwater Flow & Drainage Ditches
- Dewatering/water Clarification Channels



Environmental Green

#### Size Availability:

- 12" & 24" Trapezoidal
- 24" Semi-Circular

#### Suggested Applications:

- Golf Course Stormwater, Irrigation & Drainage Channels
- Residential Communities
- Forest Reserve and Park Drainage Projects



Desert Tan

#### Size Availability:

- 12" & 24" Trapezoidal
- 24" Semi-Circular

#### Suggested Applications:

- Golf Course Stormwater, Irrigation & Drainage Channels
- Southwestern Residential Communities
- Park Drainage Projects
- Drainage Channels in Arid & Desert Climate Settings



[www.SmartDitch.com](http://www.SmartDitch.com)

1-866-576-2783